

March

**COTTON
NYLON OTTOMAN**
77% COTTON, 23% NYLON



**High Collar Coat
with 3/4 Sleeves**
S2CNO-C0602
Cinder
P
Retail Exclusive

STRETCH LACE MESH
80% MICRO NYLON,
20% SPANDEX



Ballet Neck Box-Top
S2VFL-T2022
Black
P, W

SILK SHEEN STRIPE
70% SILK, 30% VISCOSE



**Bateau Neck Box-Top
with Dipped Hem**
S2SLL-W1862
Graphite
P, W

STRETCH SILK JERSEY
100% SILK



**Scoop Neck Long
Slim Cami**
S2GK-U0939
Black

OPEN TWIST
82% VISCOSE,
18% POLYESTER



COTTON METALLIC STITCH
82% COTTON, 18% METALLIC



SILK COTTON INTERLOCK
80% SILK, 20% COTTON



**Scoop Neck Top with
Dolman Sleeves**
R1MLO-W1756
Dark Pearl
P
Retail Exclusive

**V-Neck Top with Dolman
Short Sleeves**
S2CST-W1907
Blue Angel, Cinder*
P, W

**Long Straight Cardigan
with 3/4 Sleeves**
S2CST-K2714
Bone

**Funnel Neck Jacket
with 3/4 Dolman Sleeves**
S2QC-J0362
Bone
P, W

WASHED DELAVE LINEN
100% LINEN



**U-Neck Calf-Length
A-Line Dress with
Rounded Hem & Tie Belt**
S2LLL-D1332
Blue Angel*, Denim
P, W

LINEN COTTON SLUB
56% LINEN, 44% COTTON



Long Straight Cardigan
S2LF-K2184
White, Black*
P, W

LINEN COTTON SLUB STITCH MIX
56% LINEN, 44% COTTON



**V-Neck Tunic with
Dipped Hem**
S2LFP-W1977
Citrus, White
P



**Boxy Cardigan with 3/4
Sleeves & Angled Front**
S2LFP-K1372
Blue Angel, Cinder
P, W

**Available in select stores*



Scoop Neck Tunic
SBGK-U2005
Black
P, W
Part of our Seasonal Basics



U-Neck Long Tunic with Tapered Hem
SBGK-U0428
Cinder, Black
P, W
Part of our Seasonal Basics



Scoop Neck Long Tunic
SBGK-U1330
Black
P
Part of our Seasonal Basics



Wide-Leg Pant
S2GK-P0663
Cinder, Black
P



33" Full-Length Pencil Skirt
S2GK-S0863
Black

**SANDWASHED SILK
CHARMEUSE**
100% SILK



SHEER VISCOSE LINEN
80% VISCOSE, 20% LINEN



WASHABLE STRETCH CREPE
70% VISCOSE, 24% NYLON, 6% LYCRA



**COZY VISCOSE
STRETCH KNIT**
90% VISCOSE, 7% NYLON,
3% SPANDEX



**Scoop Neck
Sleeveless Tunic**
S2SC-U1746
Bone

**Bateau Neck Box-Top
with Dolman Sleeves
& Rounded Hem**
S2VLN-W1262
Blue Angel*, Bone, Cinder*
P, W

Slim Ankle Pant with Yoke
S2TK-P0696
Bone
SBTK-P0696
Cinder
P, W
Part of our Seasonal Basics

**Foldover Short
Pencil Skirt**
S2TK-S1739
Cinder
SBTK-S1739
Black
P, W
Part of our Seasonal Basics

**Shawl Collar Oval Cardigan
with 3/4 Sleeves**
S2GZF-K1083
Dark Pearl
P

**ORGANIC SOFT
STRETCH DENIM**
84% ORGANIC COTTON,
14% POLYESTER, 2% SPANDEX



RUMPLED COTTON STEEL
59% COTTON, 32% NYLON,
9% METALLIC



**WASHED LINEN
CROSS-DYE**
100% LINEN



**HANDLOOMED
SILK STRIPE**
100% SILK



SHIBORI SPIRAL
100% SILK



Skinny Jean
S2MDN-P8010
Size 2-16
Washed Indigo*

Funnel Neck Long Jacket
S2UM-J2262
Cinder*

Kerchief
S2WGD-A0472
Blue Angel, Cinder, Citrus

Scarf
S2GSS-A0248
Blue Angel, Toffee Cream

Scarf
S2SBI-A0530
Cinder

REFINED VISCOSE PLEAT
84% VISCOSE, 16% NYLON



Scoop Neck Full-Length Dress with Dipped Hem
S2GK-D1058
Cinder, Black
P, W



Shaped Long Pleated Cardigan
S2VNP-K2894
Cinder
P, W

SHEER HEMP
86% HEMP, 14% NYLON



Scoop Neck Top with Dolman Sleeves
S2A6-W1264
Black
Retail Exclusive

OCEAN STRETCH
72% COTTON, 26% LINEN,
2% SPANDEX



Stand Collar Long Jacket
S2ONS-J2575
Cinder*

RIPPLE BINDU SILK
100% SILK



Round Neck Long Jacket with Bracelet Sleeves
S2BSI-J1678
Black*

TROPICAL SUITING WITH RECYCLED POLY
65% POLYESTER, 35% RECYCLED POLYESTER
LINING: 65% SILK, 30% NYLON, 5% SPANDEX



Notched Collar Long Shaped Jacket
S2TRE-J8289
Size 2-16
Black*



Straight Pant with Side Zip
S2TRE-P8506
Size 2-16
Black



21" Knee-Length Straight Skirt
S2TRE-S1197
Black*



U-Neck Shell with Tapered Hem
S2VF-U0458
Black



Slouchy Pant
S2VF-P1668
Black

SEQUINED CHAINMAIL JERSEY
95% COTTON,
5% POLYESTER



Scarf
S2CHN-A0350
Silver

SHEER SILK GEORGETTE
100% SILK



Wrap
S2GTT-A0040
Black

LINEN SHIMMER STRIPE
90% LINEN, 8% VISCOSE,
2% NYLON



Scarf
S2LMT-A0357
Dark Pearl, Mahogany

HANDLOOMED COTTON IKAT STRIPE
100% COTTON



Scarf
S2HIS-A0122
Cinder*

NATURAL DYED ORGANIC COTTON STRIPE
100% ORGANIC COTTON



Infinity Scarf
S2NDO-A0552
Moon*

LINEN VISCOSE STRETCH
62% LINEN, 36% VISCOSE, 2% SPANDEX



Notch Collar Shaped Jacket
S2VX-J8100
Size 2-16
Cinder
P



Straight Trouser with Yoke
S2VX-P8150
Size 2-16
Cinder
P, W



**29" Calf-Length
Lantern Skirt**
S2VX-S1323
Cinder
P



**Drape Neck Tank
with Rounded Hem**
S2PLR-U1559
Black



Blue Angel



Cinder

**ORGANIC
COTTON BABY RIB**
100% ORGANIC COTTON



**Draped Front Knee-Length
Dress with Cap Sleeves**
S2VF-D2026
Black
W



Scoop Neck Long Slim Tank
S2ORB-U0839
Cinder, Blue Angel*

LINEN JERSEY
100% LINEN

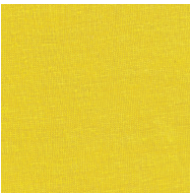


**Rounded V-Neck Tee with
Elbow Sleeves & Rounded
Hem**
S2IZ-T1747
Blue Angel, Cinder, Citrus,
White

**ORGANIC
COTTON & CASHMERE**
85% ORGANIC COTTON,
15% CASHMERE



**Scoop Neck Short Cardigan
with 3/4 Sleeves**
S2OCF-K1172
Citrus
P, W



Citrus



Dark Pearl

**TENCEL ORGANIC
COTTON STRIPE**
70% ORGANIC COTTON,
30% TENCEL



Kerchief
S2TOC-A0595
Cinder



Bone



White



Black

April

LINEN VISCOSE MESH
57% LINEN, 43% VISCOSE



**Straight Cardigan
with Dipped Hem**
S2LVE-K2361
Amaryllis, Black
P, W

DRAPEY LINEN CRIMP
80% LINEN, 20% VISCOSE



V-Neck Twist Front Top
S2LNV-W1698
Amaryllis, White, Black*
P, W

STRETCH SILK JERSEY
100% SILK



Scoop Neck Tank
S2GK-U2001
Toffee Cream



U-Neck Calf-Length Dress
S2GK-D2045
Amaryllis
P

ORGANIC COTTON BABY RIB
100% ORGANIC COTTON



**Scoop Neck Long
Slim Tank**
S2ORB-U0839
Strawberry
W



**Scoop Neck Slim Tee
with Short Sleeves**
S2ORB-T1489
White, Black

LINEN VISCOSE STRETCH
62% LINEN, 36% VISCOSE, 2% SPANDEX



Straight Trouser with Yoke
S2VX-P8150
Size 2-16
Driftwood
P



**Full-Length Lantern
Dress with Side Zip**
S2VX-D1555
Strawberry

**ORGANIC COTTON
HEMP TWIST**
55% HEMP,
45% ORGANIC COTTON



**Cowl Neck Knee-Length
Dress with Dipped Hem**
S2HOC-D1675
Citrus

VISCOSE JERSEY
92% RAYON, 8% LYCRA



Foldover Straight Maxi Skirt
S2VF-S1002
Black

ORGANIC COTTON EASY JERSEY
100% ORGANIC COTTON



Scoop Neck Long Tunic
S2OS-U1330
White



Classic Collar Boxy Shirt
S2OS-T1730
White
W

SHEER SILK GEORGETTE
100% SILK



**Scoop Neck Box-Top
with Short Dolman Sleeves
& Dipped Hem**
S2GT-T2144
Cinder, Toffee Cream, Black*

**PINTUCKED
GOSSAMER CREPE**
67% VISCOSE, 33% NYLON



Poncho
S2PTG-A1030
Black
One Size

LINEN DELAVE RIB PLAY
100% LINEN



Cascading Cardigan
S2LDY-K2217
Strawberry, Toffee Cream
P

SHEER VISCOSE LINEN
80% VISCOSE, 20% LINEN



**V-Neck Tunic
with Dipped Hem**
S2VLN-W1858
White
P

COTTON TAPE NUBBLE
100% COTTON



U-Neck Tank
S2CPS-U1192
White

**LIGHTWEIGHT
FINE GAUGE LINEN**
100% LINEN



**Scoop Neck Cropped
Poncho with Dipped Hem**
S2LWL-W1959
White
Retail Exclusive

LINEN COTTON SLUB
56% LINEN, 44% COTTON



**Straight Cardigan
with Raglan Sleeves**
S2LF-K1109
Natural, Strawberry
P

FINE GAUGE LINEN
100% LINEN



**Bateau Neck Box-Top
with 3/4 Sleeves**
S2LGJ-W2056
Strawberry, Ultrapink*, White
P, W

**LIGHTWEIGHT
ORGANIC DENIM**
90% ORGANIC COTTON,
8% ELASTERELL-P,
2% ELASTANE



Slim Ankle Jean
S2ODN-P8910
Size 2-16
Grey, White
P

LINEN JERSEY
100% LINEN



U-Neck Long Tank
SBIZ-U0127
White
W
Part of our Seasonal Basics

ORGANIC COTTON KNIT
100% ORGANIC COTTON



**Box-Top with Raglan
Sleeves & Uneven Hem**
S2OH-W1326
Dark Oatmeal



**Hooded Boxy Long
Cardigan with 3/4 Sleeves
with Zip Front & Dipped
Hem**
S2OH-K2875
Dark Oatmeal

ORGANIC COTTON MÉLANGE STRETCH
96% ORGANIC COTTON, 4% SPANDEX



**Hooded Boxy Long
Cardigan with Zip
Front & Dipped Hem**
S2CTM-K1288
Cinder
P, W



**Drawstring Cropped
Pant with Cuff**
S2CTM-P0736
Cinder
P, W

**COLORFIELD SHIBORI
SILK GEORGETTE**
100% SILK



Square Scarf
S2CLG-A0492
Driftwood, Strawberry,
Toffee Cream

HEAVY LINEN
100% LINEN



Ankle Pant
S2HL-P1168
White
P



Wide-Leg Trouser
S2HL-P8755
Size 2-16
Cinder
P, W



31" Full-Length Bias Skirt
S2HL-S0466
White
P, W

HANDKERCHIEF LINEN
100% IRISH LINEN



**Hooded Long Jacket
with 2-Way Zip**
S2AL-J2124
White
P, W

LINEN GAUZE
100% LINEN



**V-Neck Tunic with Rounded
Hem & Bracelet Sleeves**
S2NF-T1800
Strawberry
P, W



Scoop Neck Long Tunic
SBIZ-U1005
Cinder, White
P, W
Part of our Seasonal Basics



**Rounded V-Neck Tee with
Elbow Sleeves & Rounded
Hem**
S2IZ-T1747
Amaryllis



**U-Neck Tee with
Short Sleeves**
S2IZ-T1919
Gladiola, Strawberry,
Ultrapink, White
P



**Scoop Neck Layering Dress
with Elbow Sleeves**
S2IZ-D2578
White
P



**30" Calf-Length A-Line
Skirt**
S2IZ-S2156
Cinder
P, W

**FLOATING LINEN
COTTON LAYERS**
75% LINEN, 25% MODAL



Scarf
S2FLC-A0517
Amaryllis, Driftwood

**CROSS-DYED
WHISPER SILK**
100% SILK



Wrap
S2CDW-A0040
Amaryllis, Gladiola, Tarragon

DRAPEY METALLIC KNIT
70% VISCOSE, 30% METALLIC



Skinny Scarf
S2SNY-A0410
Silver

TINTED GAUZE
100% COTTON



Square Scarf
S2TNG-A0545
Amaryllis, Ultrapink, White

**HANDLOOMED AIRY
COTTON STRIPE**
100% COTTON



Scarf
S22Z-A0560
Gladiola, Grapefruit
Retail Exclusive



**Round Neck Tunic with
Rolled Elbow Sleeves**

S2NF-T2149
White
P, W



**Notch Collar Jacket
with 3/4 Sleeves**

S2NF-J2524
Driftwood
P

**GARMENT DYED ORGANIC
COTTON STRETCH TWILL**
98% ORGANIC COTTON,
2% SPANDEX



Skinny Ankle Jean

S2GDD-P8910
Size 2-16
Strawberry

KARMA RIPPLE STITCH
48% LINEN, 37% VISCOSE,
15% NYLON



**V-Neck Top with
Dolman Short Sleeves**

S2KAM-W1907
Natural
P



Toffee Cream



Cinder

ORGANIC COTTON STRETCH JERSEY
90% ORGANIC COTTON, 10% LYCRA



**Racer-Back Long Cami
with Self-Bra**

S2OJ-U1108
White



**(Lightweight)
Cropped Legging**

S2OL-P0032
Cinder, White, Black



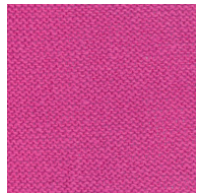
Cropped Pant with Snaps

S2OJ-P0694
Black

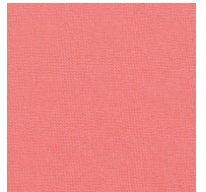


**Short Oval Cardigan
with 3/4 Dolman Sleeves**

S2UFJ-K2333
Cinder



Ultrapink



Gladiola

OMBRÉ LINEN KNIT
100% LINEN



Infinity Scarf
S2AON-A0352
Gladiola*

**NATURAL DYED
SHIBORI STRIPE**
100% SILK



Triangle Scarf
S2SIM-A0401
Caramel



Strawberry



Amaryllis



Driftwood

May

SHEER SILK GEORGETTE

100% SILK
100% SILK



**Round Neck Tunic
with Bracelet Sleeves**
S2GT-T0588
Sapphire, Silver*
P, W



Poncho
S2GT-A0549
Silver*



**V-Neck Knee-Length Dress
with Dipped Hem & Slip**
S2GT-D2095
Sapphire, Black
P, W

**MINI-SEQUIN
CHAINMAIL JERSEY**
95% COTTON, 5% POLYESTER



Drape Neck Tank
S2CHN-U1559
Silver

**SHEER COTTON
LINEN WAVE**
53% COTTON,
25% LINEN, 22% NYLON



Scoop Neck Tunic
S2CLY-W1575
White
P

**ORGANIC COTTON
BABY RIB**
100% ORGANIC COTTON



Scoop Neck Long Slim Tank
S2ORB-U0839
Sapphire
W

LINEN GAUZE
100% LINEN



**Scoop Neck Long Top
with Short Sleeves**
S2NF-T2130
Bayberry, Sapphire
W

OPEN FINE GAUGE LINEN
100% LINEN



**Scoop Neck Top with
Raglan Sleeves**
S2X-W1802
Bayberry, Celadon,
Natural, Sapphire
P
Retail Exclusive

LINEN JERSEY STRIPE
100% LINEN



**Rounded V-Neck Top with
Elbow Sleeves & Rounded
Hem**
S2IZK-T1747
Silver/White

**LIGHTWEIGHT
ORGANIC DENIM**
90% ORGANIC COTTON,
8% ELASTERELL-P,
2% ELASTANE



Wide-Leg Pant
S2ODN-P8027
Size 2-16
White

**WASHED COTTON
TENCEL TWILL**
57% COTTON, 40% LYOCCELL,
3% SPANDEX



Cropped Cargo
S2WEC-P1735
Oregon
P

TINTED GAUZE
100% COTTON



Scarf
S2TNG-A0544
Bayberry, Grapefruit, Sapphire
P

**PRECIOUS METAL
OPEN TEXTURE**
84% LINEN, 16% METALLIC



**V-Neck Top with
Short Sleeves**
S2PRT-W1907
Silver
P

**ULTRAFINE SILK
TUSSAH JERSEY WITH
CHIFFON TRIM**
100% SILK TUSSAH



**V-Neck Box Top with Short
Sleeves & Side Vents**
S21X-W1392
Silver
Retail Exclusive

STRETCH SILK JERSEY
100% SILK



Scoop Neck Long Slim Cami
S2GK-U0939
Sapphire, Silver

SILK GEORGETTE CREPE
100% SILK



**Cropped Pant
with Drawstring**
S2GC-P2321
Silver

SILK HABUTAI
100% SILK



Tiered Maxi Skirt
S2YH-S1422
Black*

ORGANIC LINEN
100% ORGANIC LINEN



Wide-Leg Drawstring Pant
S2RI-P1236
Silver, White



**25" Knee-Length
A-Line Drawstring Skirt**
S2RI-S1366
Silver
P

WASHABLE STRETCH CREPE
70% VISCOSE, 24% NYLON, 6% LYCRA



Slim Capri with Yoke
SBTK-P0516
White, Black
P
Part of our Seasonal Basics



**Wide Cropped
Pant with Yoke**
S2TK-P0123
Black
W



Slim Ankle Pant with Yoke
S2TK-P0696
Silver
P

**WATERCOLOR
SHIBORI SILK**
100% SILK



Scarf
S2WSI-A0271
Buff*, Sapphire

WHISPER SILK
100% SILK



Wrap
S2WL-A0040
Bayberry, Silver

SHEER SILK GEORGETTE
100% SILK



Wrap
S2GTT-A0040
Sapphire*

LINEAR KARMA TEXTURE

45% LINEN, 33% VISCOSE,
22% NYLON

**Shaped Cardigan with Elbow Sleeves & Dipped Hem**

S2LKT-K1769
Silver
P

SHEER VISCOSE LINEN

80% VISCOSE, 20% LINEN

**Cardigan with Dipped Hem**

S2VLN-K2833
Sapphire, White, Black*
P, W

HANDKERCHIEF LINEN

100% IRISH LINEN

**Round Neck Tunic with 3/4 Sleeves & Pintucks**

S2AL-T0872
White
P, W

**Notch Collar Jacket**

S2AL-J2248
White, Black*
P, W

**Round Neck Full-Length Dress with Ties**

S2AL-D0618
White
P, W

VISCOSE JERSEY

92% RAYON, 8% LYCRA

**Wide Neck Knee-Length Oval Dress with Back Cutout**

S2VF-D1834
Sapphire, Black
P

LINEN JERSEY

100% LINEN

**Bateau Neck Box-Top with Short Sleeves**

S2IZ-T1281
Celadon, Sapphire, White
P

**U-Neck Tee with Short Sleeves**

S2IZ-T1919
Bayberry, Grapefruit
P

**Cropped Straight Pant**

S2IZ-P1694
White

ORGANIC COTTON HEMP TWIST

55% HEMP,
45% ORGANIC COTTON

**Bateau Neck Box-Top with Rounded Hem**

S2HOC-T1520
Bayberry, Buff*, Cinder

LINEN MINI-TAPE

72% LINEN, 28% NYLON



SILK COTTON JERSEY

70% SILK, 30% COTTON



SHEER COTTON LINEN

53% COTTON, 25% LINEN,
22% NYLON



Silver

Bateau Neck Box-Top

S2LMI-W0096

White*

**Wide V-Neck Tee
with Tapered Hem**

S2SCJ-T2018

Dark Pearl*

Maxi Skirt with Pleats

S2SCJ-S1243

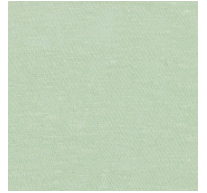
Dark Pearl

**V-Neck Tunic
with Dolman Sleeves
& Tapered Hem**

S2CLN-W2005

Bayberry, Sapphire

W



Celadon

LINEN VISCOSE STRETCH

62% LINEN, 36% VISCOSE,
2% SPANDEX



Sapphire

**Full-Length Skirt
with Diagonal Seams**

S2HOC-S1410

Cinder

**Cowl Neck Knee-Length
Dress with Dipped Hem**

S2HOC-D1675

Bayberry

P, W

Slim Capri

S2VX-P8564

Size 2-16

Cinder

Drawstring Cropped Cargo

S2VX-P8033

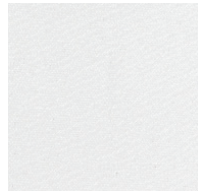
Size 2-16

Black

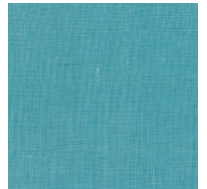
P



Oregano



White



Bayberry



Grapefruit

June

PRECIOUS METAL
81% LINEN, 15% METALLIC,
4% COTTON



Vest with Angled Hem
S2PRM-V0787
Dove, Oregano

PRECIOUS METAL RIB
80% LINEN, 15% METALLIC,
5% COTTON



**Short Cardigan
with 3/4 Sleeves**
S2PRF-K1394
Dove
P, W

SILK HABUTAI
100% SILK



Tiered Maxi Skirt
S2YH-S1422
Dove, Oregano
P, W



**V-Neck Knee-Length Dress
with Dipped Hem**
S2YH-D2095
Aztec

STRETCH LACE MESH
80% MICRO NYLON,
20% SPANDEX



**Scoop Neck Long Tank
with Dipped Hem**
S2VFL-U0831
Black

FINE SILK LINEN
60% SILK, 40% LINEN



**Drape Front Top with
Raglan 3/4 Sleeves**
S2FSL-W1597
African Violet,
Aztec, Emerald
P

LINEN COTTON SLUB
56% LINEN, 44% COTTON



**Straight Cardigan
with Raglan Sleeves**
S2LF-K1109
African Violet,
White, Black
P

LINEN JERSEY
100% LINEN



**Scoop Neck
Long Tunic**
S2IZ-U1005
Dove, Oregano

**U-Neck
Racer-Back Tunic
with Dipped Hem**
S2IZ-U0899
African Violet,
White, Black
P, W

**LINEN JERSEY
STRIPE**
100% LINEN



**U-Neck Racer-Back
Calf-Length Dress
with Rounded Hem**
S2IZK-D1897
Oregano/Black
P

**ORGANIC COTTON
BABY RIB**
100% ORGANIC COTTON



**Scoop Neck
Long Slim Tank**
S2ORB-U0839
African Violet, Emerald

MALIBU LINEN MESH
52% LINEN, 31% COTTON,
17% NYLON



Deep-V Boxy Cardigan
S2LMR-K2888
White

**LIGHTWEIGHT SANDED
STRETCH DENIM**
98% COTTON, 2% SPANDEX



Slim Ankle Jean
S2SDS-P8910
Size 2-16
African Violet, Emerald

STRETCH SILK JERSEY
100% SILK



V-Neck Top with Dolman Sleeves & Tapered Hem
S2GK-T1753
Oregano*

SILK COTTON JERSEY
70% SILK, 30% COTTON



Wide Neck Tunic with Elbow Sleeves & Dipped Hem
S2SCJ-T2290
Dove*, Oregano*, Black
P

FINE LINEN SLUB LINKS
100% LINEN



Cascading Vest
S2LBL-V0811
White, Black*
P



Scoop Neck Top with Dolman Elbow Sleeves
S2LBL-W1924
African Violet, White, Black*
P

SILK GEORGETTE CREPE
100% SILK



Cropped Pant with Drawstring
S2GC-P2321
Black



V-Neck Cardigan with Dolman Short Sleeves & Tapered Hem
S2IZ-K2077
White, Black
P, W



U-Neck Tee with Short Sleeves
S2IZ-T1919
African Violet
P



V-Neck Boxy Tunic with Dolman Elbow Sleeves
S2IZ-T1751
Cinder, Emerald
P



24" Paneled Knee-Length Skirt with Yoke
S2IZ-S1650
Dove
P



ORGANIC COTTON STRETCH JERSEY
90% ORGANIC COTTON, 10% LYCRA

V-Neck Surplice Knee-Length Dress with Dipped Hem
S2OJ-D1328
African Violet, Emerald

LINEN CORD SHEEN
100% LINEN



Scoop Neck Box-Top with Elbow Sleeves
S2LNC-W0989
Khaki
P

RUSTIC LINEN TAPE
53% POLYESTER, 47% LINEN



Scoop Neck Tank
S2RTP-U1655
Natural
P, W

LIGHTWEIGHT ORGANIC COTTON CANVAS
100% ORGANIC COTTON



Cropped Pant with Tabs
S2LCC-P0764
Khaki, White
P

RADIANT SHIBORI CHIFFON
100% SILK



Scarf
S2RSB-A0555
Caramel, Dove*

MULTI-STRIPE LINEN
100% LINEN



Scarf
S2MPD-A0235
African Violet, Arabesque, Dove

LINEN SHIBORI HORIZON
100% LINEN



Scarf
S2LSI-A0376
Arabesque/Aztec, Dove/White, Emerald/Oregano*

Our System

STRETCH SILK JERSEY 100% SILK



**U-Neck Long Tunic
with Tapered Hem**
SBGK-U0428
Cinder, Black
P, W



Scoop Neck Tunic
SBGK-U2005
Black
P, W



Scoop Neck Long Tunic
SBGK-U1330
Black
P

VISCOSE JERSEY 92% RAYON, 8% LYCRA



**U-Neck Shell
with Tapered Hem**
S2VF-U0458
Black



Slouchy Pant
S2VF-P1668
Black



**Foldover Straight
Maxi Skirt**
S2VF-S1002
Black



Ankle Legging
EEVF-P0031
Black

Essentials

Available
all season

STRETCH SILK JERSEY 100% SILK



Scoop Neck Tank
EEGK-U2001
Black
P

ORGANIC COTTON BABY RIB 100% ORGANIC COTTON



Long Slim Cami
EEORB-U0939
Black, White
P, W

VISCOSE JERSEY 92% RAYON, 8% LYCRA



Ankle Legging
EEVF-P0031
Black

WASHABLE STRETCH CREPE
70% VISCOSE, 24% NYLON, 6% LYCRA



Scoop Neck Full-Length Dress with Dipped Hem
S2GK-D1058
Cinder, Black
P, W



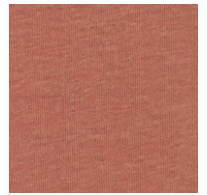
33" Full-Length Pencil Skirt
S2GK-S0863
Black



Slim Ankle Pant with Yoke
EETK-P0696
Black
SBTK-P0696
Cinder
P, W



Foldover Short Pencil Skirt
SBTK-S1739
Cinder
SBTK-S1739
Black
P, W



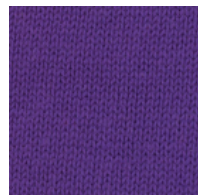
Aztec



Arabesque



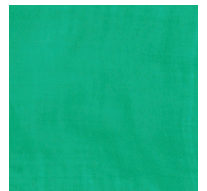
Dove



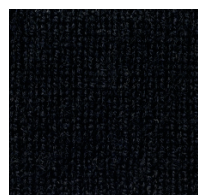
African Violet



Oregano



Emerald



Black

ORGANIC COTTON BABY RIB
100% ORGANIC COTTON



Scoop Neck Long Slim Tank
EEORB-U0939
White, Black



Scoop Neck Long Tunic
SBIZ-U1005
Cinder, White
P, W



Scoop Neck Layering Dress with Elbow Sleeves
S2IZ-D2578
White
P



30" Calf-Length A-Line Skirt
S2IZ-S2156
Cinder
P, W

ORGANIC COTTON STRETCH TWILL
95% ORGANIC COTTON, 5% SPANDEX



Slim Ankle Pant with Side Zip
EEKO-P0341
Stone, White, Black
P, W



Slim Ankle Pant with Yoke
EETK-P0696
White, Black
P, W



Straight Pant with Yoke
EETK-P0375
Black
P, W

WASHABLE STRETCH CREPE
70% VISCOSE, 24% NYLON, 6% LYCRA

Step right up.
EILEEN FISHER shoes, bags and belts.



Shape EF35258, Clay, Black, Italian Buffed Leather



Layer
EF35503
Black, Italian Leather

Dart
EF35538
Black, Italian Buffed Leather with Stretch Grosgrain

Obi Belt
ACHLL-B0321
Graphite, Linen Canvas with Italian Leather Trim

Bare
EF35035
Silver, Italian Washed Leather
Curry, Ocean
Italian Buffed Leather

Ply
EF35654
Black, Italian Leather

Fringe Bag
ACUUL-H0134
Black, Italian Leather

Span
EF35504
Saddle, Italian Oiled Leather

Chase
EF34101
Soft Gold, Metallic Washed Leather
Natural, Washed Linen
Black, Washed Leather

Tote
ACHLL-H0131
Graphite, Natural,
Linen Canvas with Italian Leather Trim



Seam
EF35032
Black, Italian Buffed Leather with Elastic

Patch-P
EF34041C
Strawberry, Italian Buffed Leather

Small Nylon Bag with Leather Straps
ACAK-H0144
Black,
Weather Resistant Cotton Nylon with Italian
Leather

Glide
EF35643
Bronze, Italian Washed Leather
Slate, Italian Tumbled Leather

Ditto
EF35018
Black, Italian Buffed Leather

**Tote with Contrasting
Stitched Handle**
ACAK-H0124
Black,
Weather Resistant Cotton Nylon with Italian
Leather

Cross
EF35245
Carbon, Italian Leather

Braid Belt
ACUUL-B0101
Cement, Black, Italian Leather

Stitched Handle Tote
ACUUL-H0124
Cement, Sand, Italian Leather



Three Ways to Shop

You can buy these and many more styles at our stores, on the web or through our personal shoppers. They're available at 866.512.5197 or online at personalshopper@eileenfisher.com, Monday through Friday, 9am–10pm, Saturday 9am–5pm EST (excluding US holidays). They're a great resource if you have questions about fabrics, color, fit—or anything else.

If you are looking for a particular style or color and it is not in your store or on the web, we can try to locate it for you. Please note that the availability of styles and colors does vary by store and by month.

Visit us online at eileenfisher.com to learn more about our company and clothes.

Customer Rewards

Retail store and online purchases count towards our rewards program. Be sure to ask your sales associate for more information.

True
EF35025
Strawberry, Italian Buffed Leather

Wide Minimalist Belt
ACUUL-B0106
Black, Italian Leather

Cling
EF35500
Clay, Italian Oiled Leather

Obi Belt
ACUUP-B0321
Black, Perforated Italian Leather

Please note that the availability of styles and colors varies by store.